

The 2018 Bellville Fair

DEPARTMENT 14

Bellville Agricultural Society Truck & Tractor Pull

Committee: Steven Broeske, Donald Traxler, Scott Walters, Jason Tilton,
Tom Pfeifer, Rob McConkie, Bob McConkie

SUNDAY SEPTEMBER 9TH 2018 – 12:00 PM • No Rain Date

New For 2018 Open pickup truck class. Sponsored by Liberty Lawn Care

*****NOTE RULE CHANGE FOR THE OPEN TRACTOR CLASSES:**

ALL OPEN TRACTORS MUST HAVE A WORKING KILL Switch

GENERAL RULES OF CONTEST

1. Drivers meeting half hour prior to pull
2. Pull will be held on two tracks
3. Weigh-ins will begin when the scales arrive
 - a. Pull order will be set at sign up
 - b. Order in class will be random
4. **\$20 hook fee for all Classes**
 - a. **We will stop taking entries for a particular class when the class before it starts, in order to have time to set the class line up.**
 - b. **If the puller enters two classes, and is unable to return for his or her second class because of breakage, their entry fee for the second class will be refunded.**
 - c. **If you would like to pull but we do not have a class for you, you are welcome to pull as a exhibition pass. The same hook fee will apply as all other classes (\$20.00). If there is enough interest in a class that we do not have please get a hold of one of the committee members, we are always open to adding classes that will help improve the pull.**
 - i. **We will have you pull at the end of the class that is the best fitting for your vehicle.**
5. First puller in each class is the test puller and has the right to reject their first pull
6. Trucks & Tractors may go through tech inspection by committee before the pull
Trucks will be teched by Buckeye Power Productions and their decisions will be final.
7. Area above and behind the hitch must be clear to hook to the sled
8. Only tractors on rubber are eligible, no track tractors or four wheel drive or dual wheels.
9. 75 feet will be allowed per start – 2 starts **Maximum**.
10. **Steel flywheels are mandatory on any tractor that runs over 3000 rpm's**
11. Boundaries will be plainly marked and pulling vehicle must stay within these limits
12. Floating finish for all classes.
13. The use of torque amplifier or power shift will be allowed.
14. **Any part falling off of the pulling vehicle after being hooked to sled will be cause for DQ**
15. Flagman has the right to stop any pull that is being done in an unsafe manner
16. **Absolutely no alcoholic beverages permitted.**
17. The committee shall have full power to decide all questions arising in connection with the contest subject of the rules and administration as provided, in any event not covered by the rules, the committee shall have full power to decide in a manner that is fairest to the majority.
18. The Bellville Agricultural Society will not be held responsible for accidents or damages to pulling vehicle, drivers, or spectators.
19. Anyone between the ages of 14-18 must have parent or legal guardians signed consent. Along with abiding by any specific safety rules listed below for his/her class.
 - a. **NO ONE UNDER THE AGE OF 14 AS OF PULL DAY WILL BE ALLOWED TO PULL.**
20. Any questions should be directed to the tractor pull committee directors listed below.

Steven Broeske 419-688-1064(Open Class Questions)
Donald Traxler 419-564-3737(Antique Class Questions)

2018 ANTIQUE TRACTOR PULL CLASSES & RULES

ANTIQUE CLASSES: Open to all of Ohio, Tractors must be 1958 or older. **Tractors may pull twice per day but not more than once per class. \$20 Hook Fee.**

➤ **Class Payouts**

- All antique classes will payout the same.
 - 1st-\$75
 - 2nd -\$50
 - 3rd -\$25

• **ANTIQUE CLASS RULES:**

- 20" Drawbar, drawbar cannot be any less the 18" from the center of the rear axle.
- Drawbar must have a hole no smaller than 3-3/4" x 3" cross sectional thickness must be equivalent to 7/8 round stock
- Weight brackets cannot exceed 11 feet from center of rear axle to furthest point forward.
- No Turbo Charged Tractors allowed
- Any driver between the ages of 14-18 is required to have a working kill switch on the rear of the tractor.
 - Must also have parent or legal guardian signed consent.
 - **NO ONE UNDER THE AGE OF 14 AS OF PULLDAY WILL BE ALLOWED TO PULL**

➤ We will be pulling the Antique Classes from heavy to light, starting with 6500# and working backwards.

- **The 7,000# Field Ready Class will pull first before any antique tractor classes pull.**

Weight Classes: Non Cut Tires

- Absolutely **NO** altered or top cut tires will be allowed
- **5 MPH Speed Limit**
- 6500#
- 5500#
- 4500#
- 3700#

Weight Classes: Cut Tires

- Non Cut tires are allowed
- **No Speed Limit**
- 6500#
- 5500#
- 4500#
- 3700#

2018 OPEN TRACTOR PULL CLASSES & RULES

OPEN CLASSES:

- Open to the world, Tractors may pull twice per day but not more than once per class.
- **\$20 hook fee**
- **All Open tractor classes must have a working Kill Switch.**
- No extension booms or weights to exceed more than 13 feet from center of rear axle to furthest point forward.
- Drawbar must have a hole no smaller than 3-3/4" x 3" cross sectional thickness must be equivalent to 7/8 round stock
- Drawbar height
 - o Hitch must be 20" or under from ground to point of hook and no closer than 18" from center of rear axle to point of hook
- Any tractor being operated by someone between the ages of 14-18 must be equipped with a seat belt as well as ROPS.
 - o The driver must also have parent or legal guardians signed consent.
 - o **NO ONE UNDER THE AGE OF 14 AS OF PULL DAY WILL BE ALLOWED TO PULL**

- 6500# Open
 - o No Tire Size Limit (cut tires allowed)
 - Class Payout
 - 1st - \$ 150.00
 - 2nd - \$ 100.00
 - 3rd - \$ 50.00
- 9000# Open
 - o No tire size Limit (cut tires allowed)
 - o Single Charger Only
 - Class Payout:
 - 1st - \$ 150.00
 - 2nd - \$ 100.00
 - 3rd - \$ 50.00
- 10,500# Hot Farm
 - o 20.8 x 38 tire limit (cut tires allowed)
 - Class Payout
 - 1st - \$ 150.00
 - 2nd - \$ 100.00
 - 3rd - \$ 50.00
- 12,000# Hot Farm
 - o 20.8 x 38 tire limit
 - Class Payout
 - 1st - \$ 150.00
 - 2nd - \$ 100.00
 - 3rd - \$ 50.00
- 15,000# Hot Farm
 - o No Tire Limit
 - Class Payout
 - 1st - \$ 150.00
 - 2nd - \$ 100.00
 - 3rd - \$ 50.00

2018 TRUCK PULL RULES

TRUCK CLASSES: Buckeye Power Productions Sanctioned

- All Classes: **Hook fee \$20.00**
 - Work Stock Diesel Trucks
 - Please Refer to Buckeye Power Productions Facebook page or Bellville Street Fair's website for rules
 - Limited Street Gas Trucks
 - Please Refer to Buckeye Power Productions Facebook page or Bellville Street Fair's website for rules
 - Cheater Stock Gas Trucks
 - Please Refer to Buckeye Power Productions Facebook page or Bellville Street Fair's website for rules

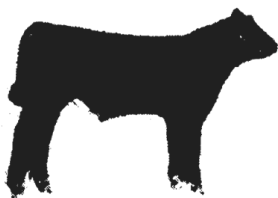
<https://m.facebook.com/buckeyepowerproductions/>

If you would like to pull but we do not have a class for you, you are welcome to pull as a exhibition pass. The same hook fee will apply as all other classes (\$20.00). If there is enough interest in a class that we do not have please get a hold of one of the committee members, we are always open to adding classes that will help improve the pull.

- i. We will have you pull at the end of the class that is the best fitting for your vehicle.

2018 Open truck class (Sponsored by Liberty Lawn Care)

- 8500# 4x4 Open Truck-Gas or Diesel
 - DOT tires only
 - Hanging weights allowed but must not exceed 60" from center of front axle
 - Front & rear u-joint shields are required
 - No 2WD trucks allowed
 - Trucks will be Teched by Bellville fair directors.
All decisions made will be final.



CIRCLE  CATTLE CO.
Club Calves
Feeder Calves

Peter, Carolyn & Steve Haip

4646 St. Rt. 546, Lexington, OH 44904

(419) 884-0582 • circleh546@embarqmail.com

The 2018 Bellville Fair

2018 FIELD READY TRACTOR PULL CLASSES & RULES

FIELD READY CLASS RULES: \$20.00 Entry Fee. Class winners will receive a trophy.

- Tractors may only pull twice per day.
- Any tractor being operated by someone between the ages of 14-18 must be equipped with a seat belt as well as ROPS.
 - o The driver must also have parent or legal guardians signed consent
 - o **NO ONE UNDER THE AGE OF 14 AS OF PULLDAY WILL BE ALLOWED TO PULL**
- No Pulling Hitches Allowed
 - o Must use a Clevis that is no smaller than 3 ¾" by 4"
 - o Puller must provide his/her own clevis
- Drawbars will be limited to a 20 inch height maximum.
- Drawbar length will be based on the standard for farm tractors.
 - o 540 RPM PTO measures 12 inches from the end of the PTO shaft to the center of the drawbar hole.
 - o 1000 RPM PTO measures 14 inches from the end of the PTO shaft to the center of the drawbar hole.
- All Weights must be hanging in factory locations
- All tractors will be subject to tech inspection before the pull.
 - o All decisions made by the Directors will be final.
- The 7,000# Class will be the first class to pull on the antique track.
 - o The other three Field Ready classes will pull on the Open track. Pulling order will be set on pull day for those classes.

Field Ready Classes:

- **7,000#**
- **9,000#**
- **12,000#**
- **15,000#**

GPS Directions:

470 S. Main Street
Bellville, OH 44813

Behind Jefferson TWP Fire Station
Contact a Committee member for directions.

www.bellvillestreetfair.org

Find Us on Facebook
@ bellvillestreetfairtractorpull
OR
@ BellvilleStreetFair/AgriculturalSociety

bellvillestreetfair@gmail.com